
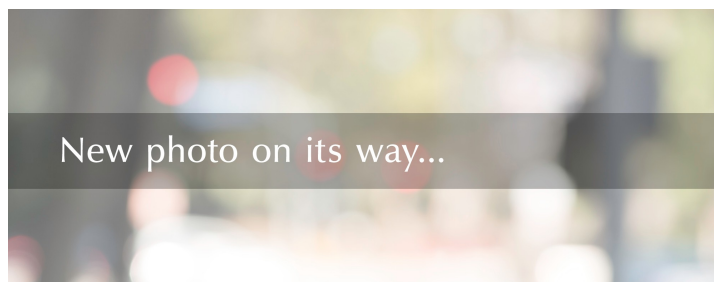


Loretta C. Thompson

PARTNER | LOS ANGELES

 +1 310 228 5756

 loretta.thompson@withersworldwide.com




Loretta is a partner on the real estate team.

Her practice includes both commercial and residential real estate matters. She regularly negotiates and facilitates real estate acquisitions and dispositions and handles tax exchanges for REIT's, public and private corporations and high net worth individuals. Loretta also has extensive experience negotiating and administrating finance transactions, commercial leasing, property management contracts, construction and design contracts, and development agreements and easements.

Prior to her legal career, Loretta spent nearly two decades as an asset manager and leasing agent for some of the highest profile tenants and landlords in Southern California. Highly specialized in industrial and commercial office space leasing, she works with public REITs, financial institutions, high tech businesses, manufacturers, distributors, and other companies to manage all types of commercial leasing transactions.

SECRETARY **VIVIENNE LANTHIER**

 + 310 228 5758

 Vivienne.Lanthier@withersworldwide.com

TRACK RECORD

Represented the Playboy Enterprises affiliated entity as seller's counsel in connection with the sale of the Playboy Mansion for a record-setting \$100 million.

Acted as lender's local California counsel in a \$65 million refinance of existing debt on a historic winery and vineyard estate.

Represented a national REIT in the \$96.5 million sale of a 2,215 unit apartment portfolio.

Acted as lender's counsel in \$85 million residential property sale.

Represented a national REIT in \$550 million in tax exchanges, resulting in significant tax savings.

Handled \$74 million apartment project sale for a national REIT.

ADMISSIONS

■ California, 2000

PUBLICATIONS

'[On the Move: Tracking the Ins and Outs of California Lawyers](#),' The Recorder - October 1, 2021, featured

'[Real Estate Lawyers on the Move](#),' Law 360 - October 6, 2021, featured

'[On the Move: Tracking the Ins and Outs of California Lawyers](#),' The Daily Journal - September 27, 2021, featured

['Wake Up Call: Women Lawyers File Amicus Brief in Abortion Case,'](#) Bloomberg Law - September 21, 2021, featured

['The Daily Docket,'](#) Thomson Reuters Westlaw - September 21, 2021, featured

['Withers grows California real estate team with partner Loretta Thompson in LA,'](#) Withers Insight - September 20, 2021, quoted

['What Attorneys Must Know As Congress Debates 1031 Program,'](#) Law360 - July 2, 2021, quoted

['Real Estate Legislation To Watch In 2021's 2nd Half,'](#) Law360 - June 30, 2021, quoted

['Forewarned and Forearmed: How to Invest Ahead of a Housing Bust,'](#) Million Acres - June 15, 2021, quoted

['Why American homebuyers will struggle to get insurance,'](#) Mortgage Professional America - May 12, 2021, quoted

['Clairvoyance and Force Majeure: Addressing These Events in Contracts With Command of the Issues,'](#) Greenspoon Marder Client Alert - April 2, 2020, author

['Eight Common Mistakes HNW Investors Make When Buying Commercial Properties,'](#) National Real Estate Investor - February 22, 2019, quoted

MEMBERSHIPS

- American Bar Association, Real Property Section, Member

- Building Owners and Managers Association of Greater Los Angeles (BOMA), Committee Member

- BOMA Sustainability Committee, Member, 2010-2014

- Vistas for Children Charity, Member

TALKS

['The ROI of Sustainability: Building a Business Case for Living Buildings,'](#) Bisnow's Los Angeles State of the Market - The Resurgence of the Los Angeles CRE Market - October 5, 2021, moderator

['A Continued Discussion On: How Environmental, Social, And Governance \(Esg\) Strategies Create Resilience And Sustainability,'](#) GM Webinar - June 23, 2021, speaker

['Buildings Need to Develop Immunity to Forces and New Realities That Affect Them - How Environmental, Social, and Governance \(ESG\) Strategies to Create Resilience and Sustainability in Real Estate,'](#) GM Webinar - May 20, 2021, speaker

['So You Think You Know Title 24: A Checklist for Operations and Tenant Improvements,'](#) BOMA GLA Codes Committee Seminar - March 30, 2017, panelist

['BOMA Energy Performance Contract Model \(BEPC\) and BOMA Green Lease and the BOMA Energy Efficiency Program \(BEEP\),'](#) Greenbuild International Conference - 2016, panelist

['Practical Issues in Section 1031 Exchanges,'](#) USC Gould School of Law 2016 Tax Institute - January 26, 2016, panelist

['Partnership and Real Estate Hot Topics,'](#) USC Gould School of Law 2016 Tax Institute - January 26, 2016, panelist

EDUCATION

Southwestern University School of Law, J.D.
Scripps College, J.D.

LANGUAGES

ENGLISH

DATES

JOINED: 2021
PARTNER: 2021

Los Angeles

10250 CONSTELLATION BOULEVARD, SUITE 1400, CA 90067